

YEAR 2005

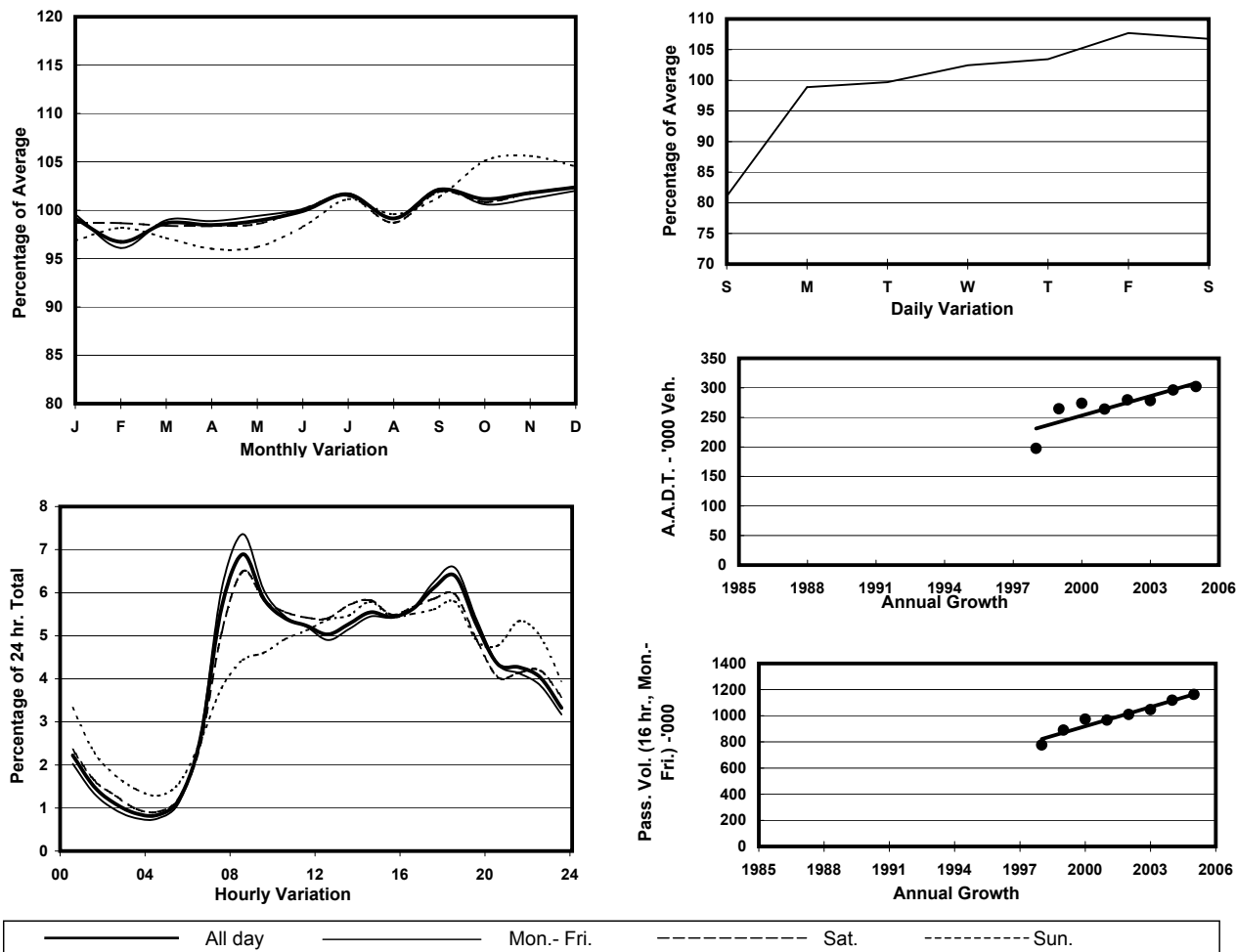
Location

Tsing Yi External Cordon(Tsing Yi Area Boundary )

Stations on Cordon/Screenline

5018, 5027, 5033, 5034, 6219 and 6221

## 1. TRAFFIC FLOW VARIATION AND GROWTH



## 2. TRAFFIC CHARACTERISTICS (BY DIRECTION)

Parameter	All - Day	Mon. - Fri.	Sat.	Sun.
<b>IN BOUND</b>				
A.A.D.T.	150810	155930	162010	123800
R 12 / 24 - %	70.4	71.5	69.9	64.1
R 16 / 24 - %	86.6	87.4	86.1	82.7
AM Peak Hour	0800-0900	0800-0900	0800-0900	0800-0900
One-way flow at AM peak hour	11200	12340	11590	5830
T - % (AM)	-	28.7	-	-
PM Peak Hour	1800-1900	1800-1900	1700-1800	1800-1900
One-way flow at PM peak hour	9670	10260	9610	7390
T - % (PM)	-	25.1	-	-
Prop.of commercial vehicles - 16 hr.	-	29.7	-	-
<b>OUT BOUND</b>				
A.A.D.T.	151240	156360	163600	123150
R 12 / 24 - %	66.5	67.6	66.7	59.6
R 16 / 24 - %	86.1	87.1	85	81
AM Peak Hour	0800-0900	0800-0900	0800-0900	0900-1000
One-way flow at AM peak hour	9620	10650	9570	5660
T - % (AM)	-	24.2	-	-
PM Peak Hour	1800-1900	1800-1900	1800-1900	1800-1900
One-way flow at PM peak hour	9630	10260	9780	6910
T - % (PM)	-	26.2	-	-
Prop.of commercial vehicles - 16 hr.	-	29.4	-	-

## 3. OTHER INFORMATION AND COMMENT

**4. Vehicle classification and occupancy - Monday to Friday**

Time		Class of vehicle									
		Motor	Private	Taxi	Private	PLB	Goods veh.		Non	Fr. Bus	
		Cycle	Car		LB		Light	M & H	Fr. Bus	SD	DD
0700-0800	Pro	3.5	29.8	15.5	1.0	2.5	17.9	15.8	8.0	0.0	5.9
	Ocp	1.0	1.5	2.0	4.0	12.1	1.6	1.2	23.3	0.0	53.2
0800-0900 Peak Hour	Pro	2.5	40.6	12.1	0.6	1.6	15.9	15.9	6.1	0.0	4.6
	Ocp	1.1	1.4	1.9	5.2	12.2	1.5	1.2	27.0	0.0	55.2
0900-1000	Pro	1.8	34.6	11.6	1.2	1.4	20.0	20.2	3.9	0.0	5.3
	Ocp	1.1	1.5	1.7	3.2	12.0	1.6	1.2	12.8	0.0	29.6
1000-1100	Pro	1.3	27.7	10.3	0.9	1.7	25.3	24.4	3.2	0.0	5.3
	Ocp	1.0	1.5	1.9	2.6	9.8	1.5	1.2	12.2	0.0	25.1
1100-1200	Pro	1.2	30.1	9.0	1.2	1.6	24.1	24.3	3.7	0.0	4.9
	Ocp	1.1	1.6	2.0	2.9	9.8	1.5	1.2	13.4	0.0	23.3
1200-1300	Pro	1.0	30.8	10.9	1.0	1.6	22.4	23.2	4.0	0.0	5.1
	Ocp	1.1	1.5	1.9	3.6	9.0	1.6	1.2	12.5	0.0	21.0
1300-1400	Pro	1.4	28.2	9.6	1.1	1.8	24.4	25.0	3.5	0.1	4.9
	Ocp	1.0	1.6	1.9	3.1	10.0	1.5	1.2	12.0	1.5	24.7
1400-1500	Pro	1.3	29.1	9.3	1.5	1.8	24.8	23.4	3.9	0.1	4.8
	Ocp	1.1	1.5	1.8	3.3	8.6	1.5	1.2	10.6	7.5	23.3
1500-1600	Pro	1.2	28.9	8.5	1.4	1.6	24.7	24.6	4.1	0.1	5.0
	Ocp	1.2	1.5	2.1	2.8	10.5	1.6	1.2	17.7	3.2	22.1
1600-1700	Pro	1.2	29.3	9.4	1.2	1.8	23.6	22.4	5.9	0.1	5.2
	Ocp	1.2	1.5	1.8	3.4	11.3	1.6	1.2	12.2	1.2	29.2
1700-1800	Pro	2.3	31.8	10.1	1.1	1.6	21.8	20.1	5.8	0.1	5.3
	Ocp	1.1	1.5	1.9	2.8	13.7	1.6	1.2	13.1	1.2	36.2
1800-1900	Pro	3.0	42.0	9.5	0.8	2.9	16.5	13.9	6.3	0.1	5.3
	Ocp	1.1	1.5	2.2	3.0	9.8	1.5	1.1	24.5	5.0	53.9
1900-2000	Pro	2.1	46.6	10.2	0.7	2.2	13.7	12.7	6.0	0.1	5.9
	Ocp	1.1	1.5	2.0	2.3	11.0	1.5	1.3	21.5	2.2	44.2
2000-2100	Pro	1.7	41.0	14.3	0.5	2.3	13.4	14.1	6.2	0.1	6.4
	Ocp	1.2	1.5	2.0	1.8	10.8	1.5	1.1	16.1	1.8	29.8
2100-2200	Pro	2.0	42.9	17.5	0.6	2.5	10.9	12.4	4.6	0.1	6.8
	Ocp	1.2	1.6	2.1	3.5	10.5	1.5	1.1	10.7	1.3	29.6
2200-2300	Pro	2.3	47.2	18.7	0.6	2.4	8.0	10.3	3.5	0.1	6.9
	Ocp	1.2	1.6	2.1	2.1	10.4	1.5	1.1	18.7	3.5	29.4
16 hours	Pro	1.9	34.8	11.4	1.0	1.9	19.5	19.1	5.0	0.1	5.4
	Ocp	1.1	1.5	2.0	3.2	10.8	1.6	1.2	17.5	2.7	34.3

**Legend**

- Pro.** Proportion of vehicles in % (Sum may not add up to 100% due to figure rounding)
- Ocp.** Average occupancy of vehicles
- M & H** Medium and Heavy